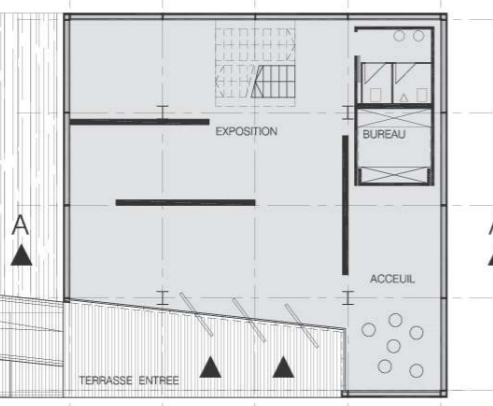
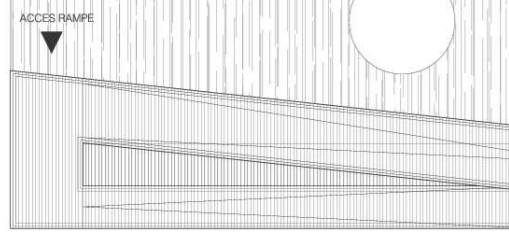
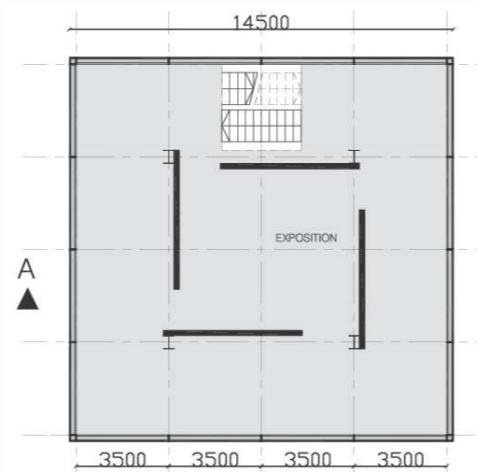


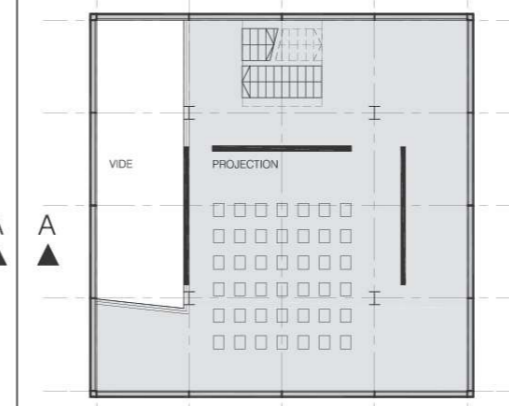
SKIP



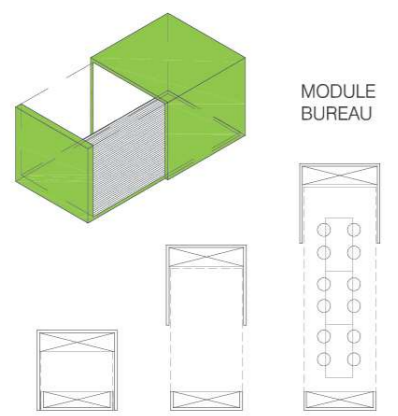
NIVEAU 3.90 1/100



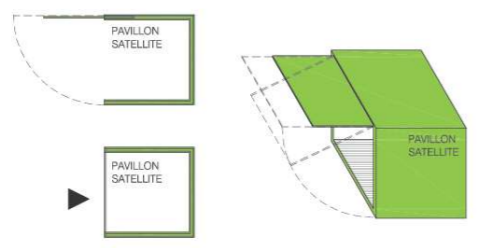
NIVEAU 7.35 1/100



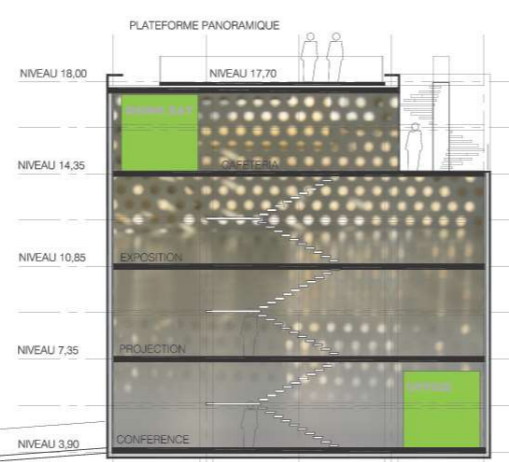
NIVEAU 10.85 1/100



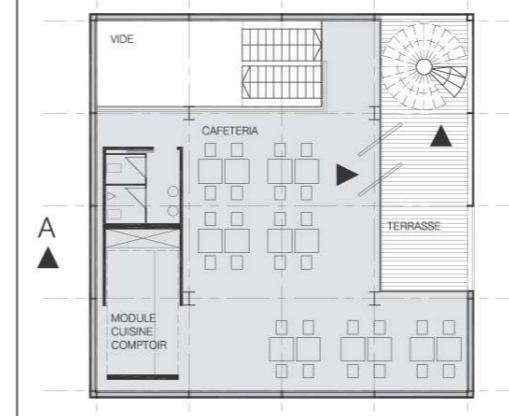
MODULE BUREAU



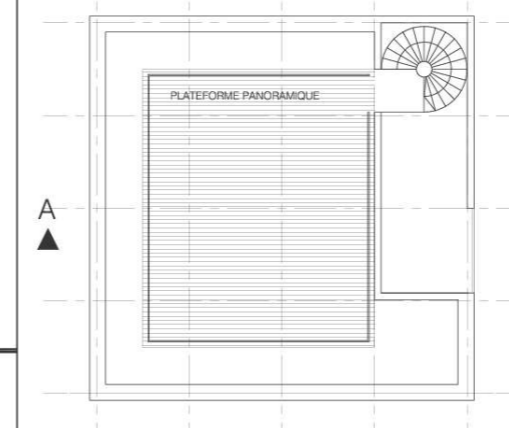
Une superficie de l'ordre de 400 m2 étant atteinte avec 2 niveaux (hauteurs d'étage variables: de 3,3m, de 6,5m, de 10,2m), le pavillon est donc extensible en ajoutant un niveau ou en doublant le nombre de niveaux. Dans cette approche, la représentation graphique montre une proposition d'extension et suggère différentes possibilités d'aménagements modulables (grâce aux modules: bureau, mini-boutique, cuisine, WC) pour l'espace d'exposition.



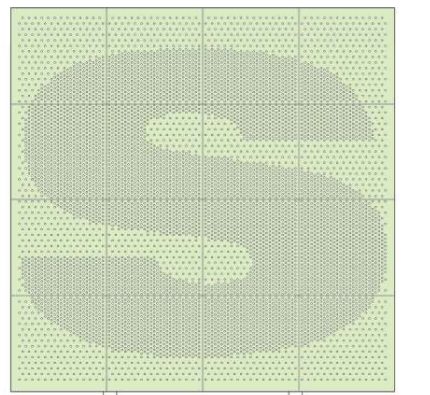
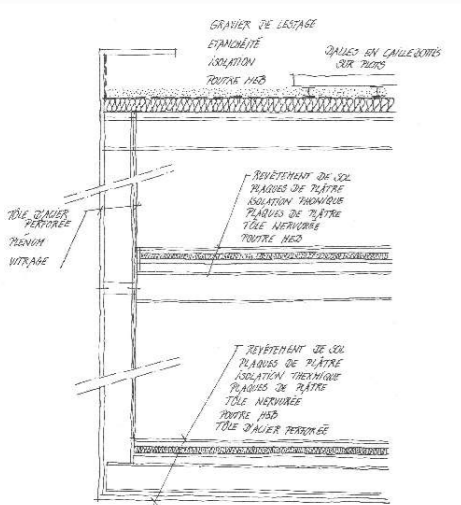
COUPE AA 1/100



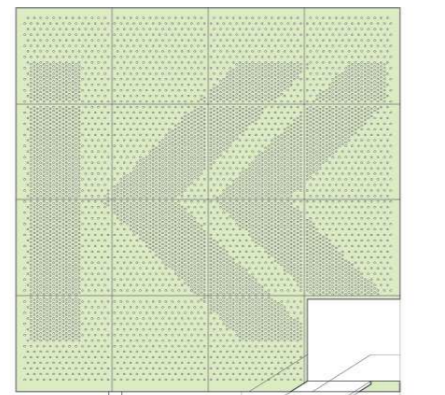
NIVEAU 14.35 1/100



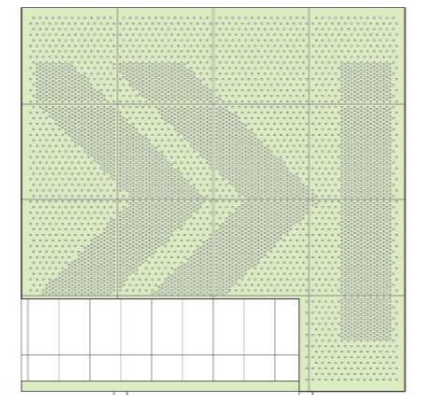
NIVEAU 3.90 1/100



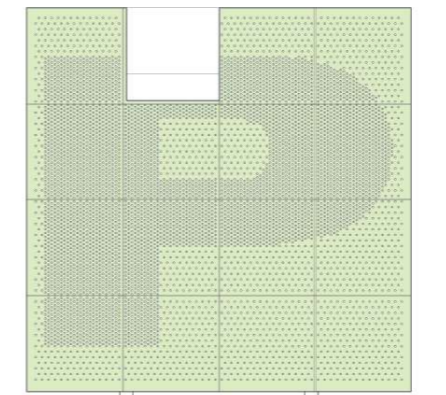
FACADE LATERALE 1/100



FACADE ENTREE 1/100



FACADE ENTREE 1/100



FACADE ARRIERE 1/100

